



# RBDMS Seismic/UIC Application

The RBDMS Seismic/UIC Application was built to address increasing prevalence of injection-induced earthquakes. It provides an analysis screen that allows users to interact with an agency's injection information and seismic information simultaneously in order to provide insights into potential problem locations and actions that may reduce earthquake risk.

The Seismic/UIC App integrates with RBDMS Core and USGS (or other) seismic data networks. The app then provides views of the data tailored to analysis needs. This includes providing charts and graphs depicting injection volumes through time for wells and regions. This information is displayed in conjunction with maps showing wells with earthquake information, allowing users to focus on areas of concern and to determine potential contributors to increased seismicity.

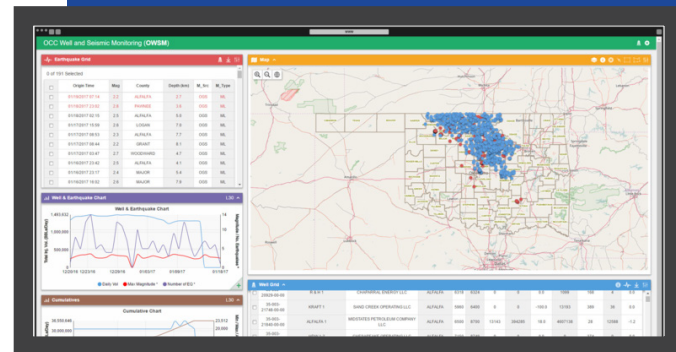
## KEY FEATURES

- Pull data from RBDMS Core
- Visualize data in charts, graphs and maps
- Facilitate analysis of seismicity issues

## TECHNICAL SPECIFICATIONS

The RBDMS Seismic/UIC Application is a web application that can be adapted to consume services from existing applications and data sources. It was built with the following primary technologies:

- Microsoft MVC 5 (VB.NET)
- AngularJS 1.4.9



### Client

#### Hardware Recommendations

- 2GB RAM or greater
- 1024x768 screen resolution

#### Software Recommendations

- Modern Web Browser
  - Firefox
  - Chrome
  - Internet Explorer/Edge
- Additional browsers may or may not be supported

### Server

#### Hardware & Software Recommendations

#### Web & Application Servers

- Microsoft Windows Server 2008 R2 or greater
- Internet Information System (IIS) 7.x+
- 1 Core 2.5Ghz CPU
- 2GB RAM or greater

#### Database Servers

This application consumes services and does not have it's own database.