

The core RBDMS software application has been developed through decades of collaboration between GWPC and state regulatory agencies. Rooted in over 20 years of innovation, RBDMS Core has adapted to the ever-changing needs of regulatory agencies. Its robust capabilities have evolved over time to provide the best tools for gathering and tracking oil and gas regulatory data.

CAPABILITIES

Organizational Management

RBDMS Core allows users to manage organizations (companies, operators, agencies... etc.) and people. Through multiple screens, users can create and edit organizations. This includes the ability to characterize the types of organizations and the status of those organizations. Users can add comments to organizations and can track changes to that organization through time.

An agency can also track people who routinely interface with the agency. This could include key contacts for an oil and gas operator or registering a complainant so that the agency can track and respond to complaints received.

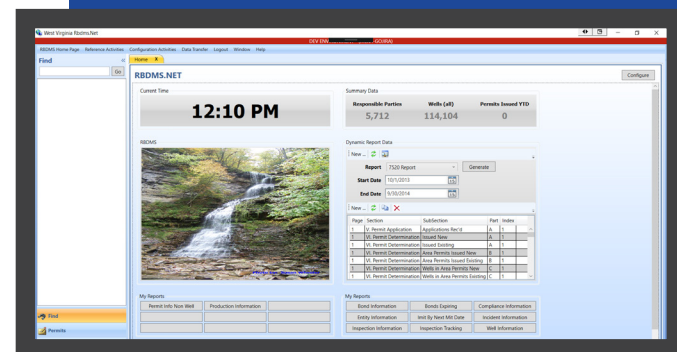
KEY FEATURES

- Create organizations and edit attributes
- Create people and edit attributes
- Relate people and organizations to organizations
- Assign roles to an organization (e.g. Operator or Cement Contractor)
- Track changes to records
- Store contact information for people and organizations
- Associate assets with an organization
- Transfer assets between organizations
- Record audit trails

TECHNICAL SPECIFICATIONS

RBDMS Core has multiple versions but is currently only installing RBDMS.NET and RBDMS 3.0 for new clients. RBDMS 3.0 is the most modern version of RBDMS Core. It is built using the following primary technologies:

- .NET Core MVC Application
- Entity Framework Core (Version 1.1.1) - ORM
- Entity Framework (Version 6.x) - ORM Used for Spatial Data Support
- iText - Support PDF generation
- Telerik - UI components for .NET Core MVC support
- Windows Authentication (Kerberos token)/ Active Directory
- ASP.NET Core Identity
- JSON Web Tokens



Client

Hardware Recommendations

- 2GB RAM or greater
- 1024x768 screen resolution

Software Recommendations

- Modern Web Browser
 - Firefox
 - Chrome
 - Internet Explorer/Edge
- Additional browsers may or may not be supported

Server

Hardware Recommendations

Configurations vary highly based on the number of concurrent users. For 125 concurrent users:

- Single Server with 4 Cores
- 16GB RAM or greater recommended
- Separate DB Server