



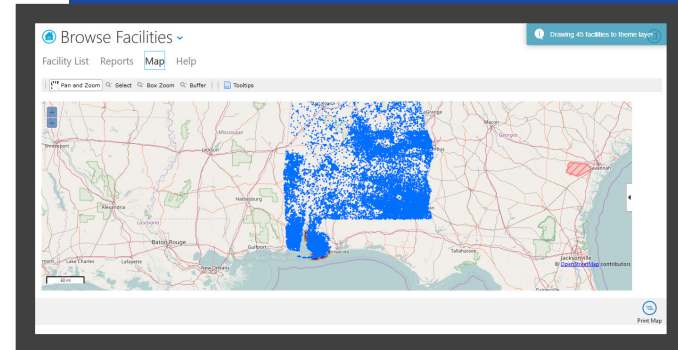
RBDMS Environmental

RBDMS Environmental is an environmental analysis tracking application that allows agencies to receive electronic records of soil, water or air sampling results. These samples can all be tracked by location, date, sampling parameters and more. This robust system can house information tied to any number of activities, including but not limited to, spill clean-up tracking, water quality sampling, air quality sampling and injectate analysis.

The application includes electronic forms for receiving submittals, managing sampling results, managing users and more. Sampling information and facilities can be displayed on a map, represented in reports and analyzed through a variety of powerful reports.

TECHNICAL SPECIFICATIONS

RBDMS Environmental was built using Microsoft Visual Studio LightSwitch for both client and server layers.



Client

Hardware Recommendations

- 2GB RAM or greater
- 1024x768 screen resolution

Software Recommendations

- Modern Web Browser
 - Firefox
 - Chrome
 - Internet Explorer/Edge
- Additional browsers may or may not be supported

Server

Hardware & Software Recommendations

Web & Application Servers

- Microsoft Windows Server 2008 R2 or greater
- Internet Information System (IIS) 7+
- 2GB RAM or greater recommended for testing and internal storage, 100 GB Hard Drive
- Scaling for public use is dependent on the number of users

Database Servers

- Microsoft Windows Server 2008 R2 or greater
- SQL Server 2008 R2, 2012, 2014, 2016
- 2GB RAM or greater recommended